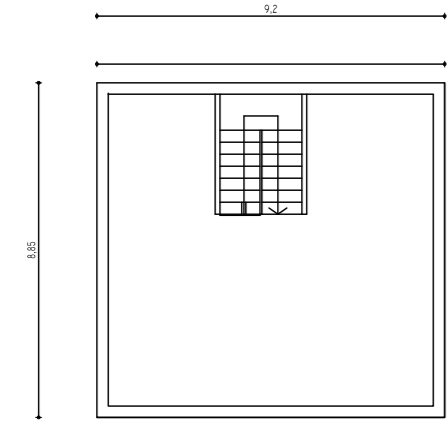
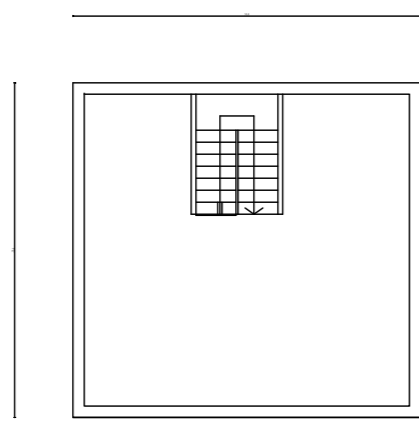


TIPOLOGIA 1 9.20 X 8.85 X 2 = S.L.P. Mq 162.85
 LOTTO 1 STRALCIO C

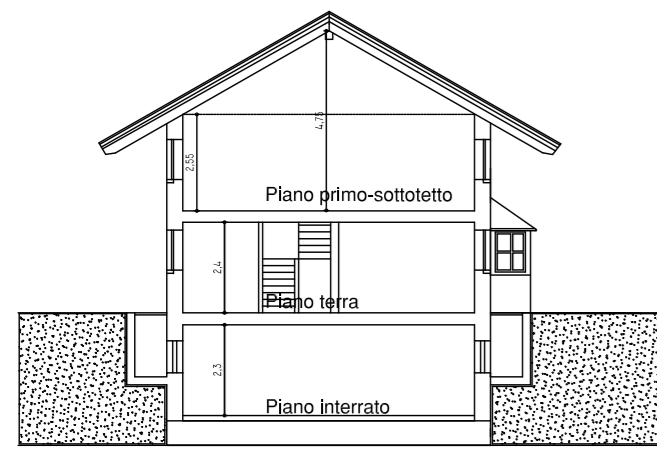
PIANTA PIANO TERRA



PIANTA PIANO PRIMO

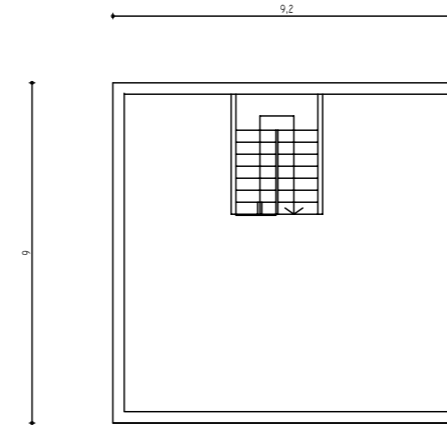


SEZIONE TRASVERSALE

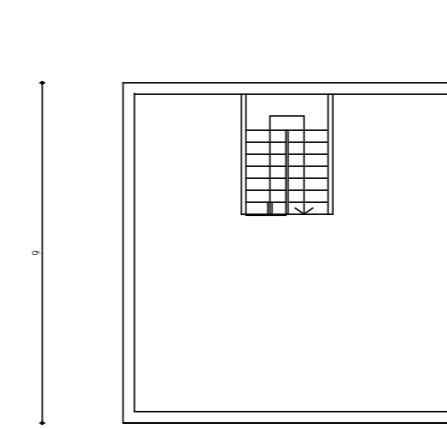


TIPOLOGIA 2 9.20 X 9,00 X 2 = S.L.P. Mq 165.6
 LOTTO 2 STRALCIO C

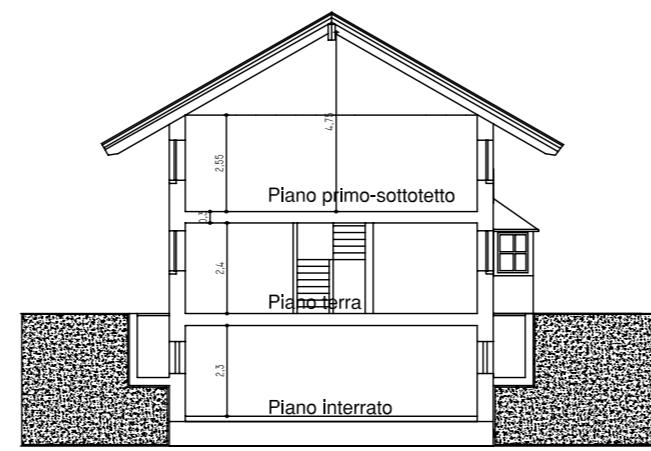
PIANTA PIANO TERRA



PIANTA PIANO PRIMO

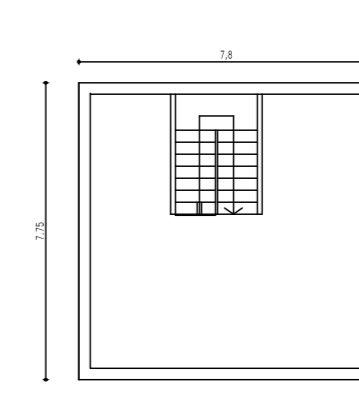


SEZIONE TRASVERSALE

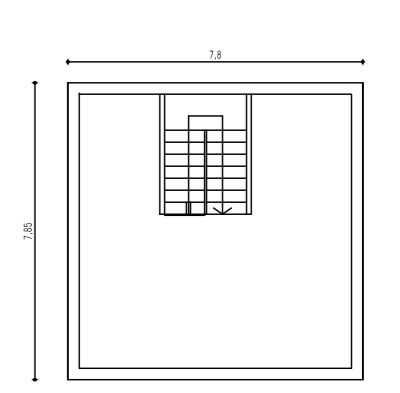


TIPOLOGIA 3 7.80 X 7.75 X 2 = S.L.P. Mq 120.90
 LOTTO 3 STRALCIO C

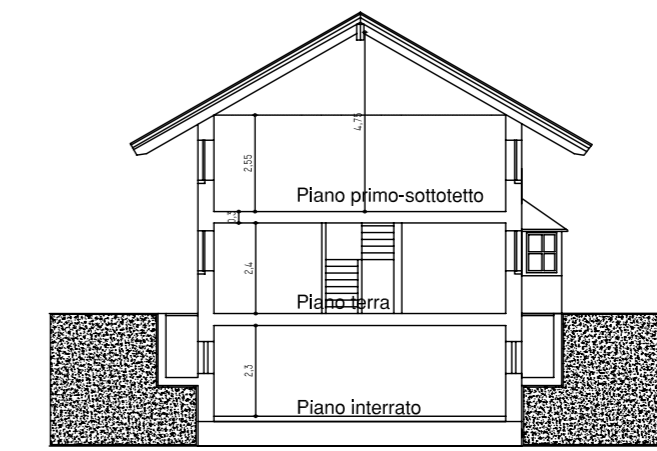
PIANTA PIANO TERRA



PIANTA PIANO PRIMO

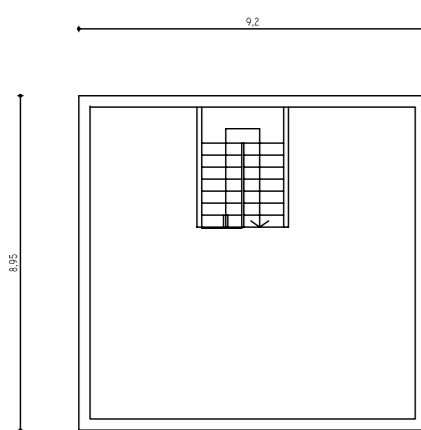


SEZIONE TRASVERSALE

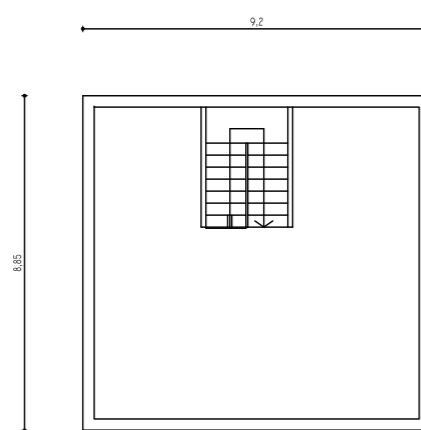


TIPOLOGIA 4 9.20 X 8.95 X 2 = S.L.P. Mq 164.68
 LOTTO 4 STRALCIO B

PIANTA PIANO TERRA



PIANTA PIANO PRIMO

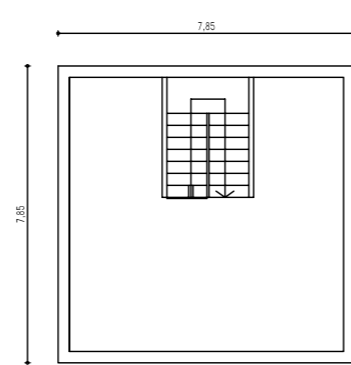


SEZIONE TRASVERSALE

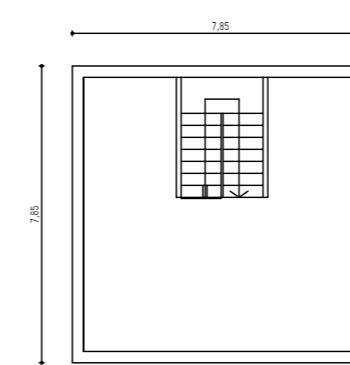


TIPOLOGIA 5 7.85 X 7.85 X 2 = S.L.P. Mq 123.24
 LOTTO 5 STRALCIO B

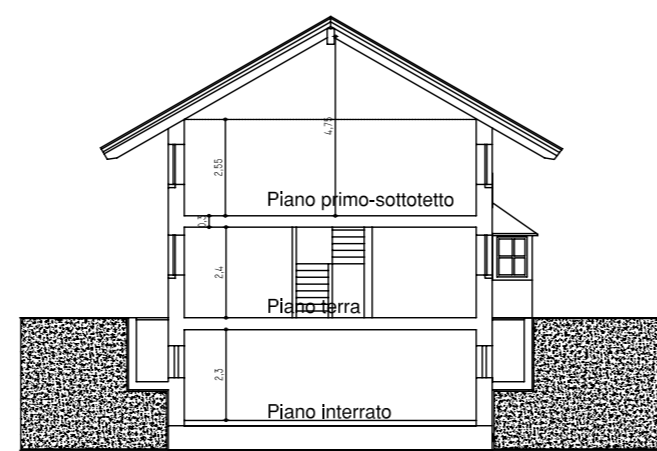
PIANTA PIANO TERRA



PIANTA PIANO PRIMO

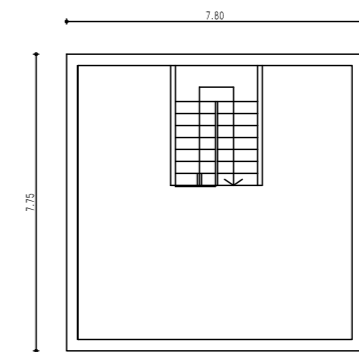


SEZIONE TRASVERSALE

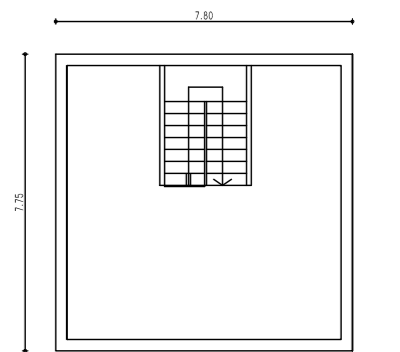


TIPOLOGIA 6 7.80 X 7.75 X 2 = S.L.P. Mq 120.90
 LOTTO 6 STRALCIO B

PIANTA PIANO TERRA



PIANTA PIANO PRIMO



SEZIONE TRASVERSALE

